

# KARIBAN

**REFERENCE :** K506

**SIZES :** S\_M\_L\_XL\_XXL

**COMPOSITION :**

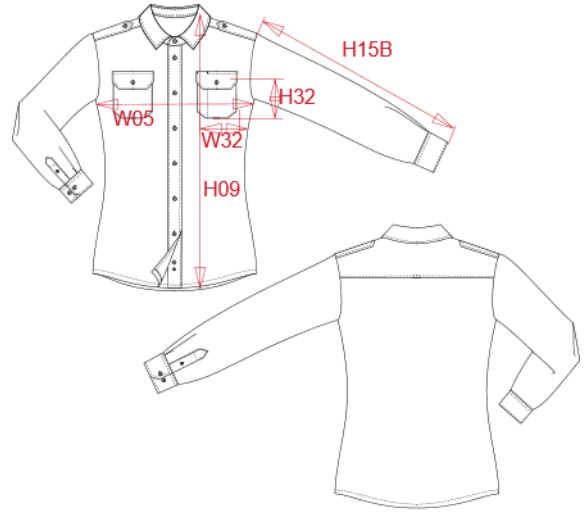
Main fabric : Polyester / Cotton poplin 65/35 - 115 65% polyester / 35%cotton

**WEIGHT :**

Main fabric : 115 gsm

**ARTICLE WEIGHT :**

182 gr/pc



DESCRIPTION
<b>Français :</b> Chemise pilote manches longues femme
<b>English :</b> Ladies' long sleeve pilot shirt
<b>Nederlands :</b> Damespilootoverhemd lange mouwen
<b>Deutsch :</b> Langarm-Pilotenhemd für Damen
<b>Español :</b> Camisa piloto de manga larga de mujer
<b>Italiano :</b> Camicia pilota donna maniche lunghe
<b>Português :</b> Camisa piloto de senhora de manga comprida

COLORS	PANTONE SERIGRAPHIE
White	White
Sky blue	278C

MEASUREMENT						
Description	S	M	L	XL	XXL	
<b>H09 (L)</b> Hauteur totale devant / Front total height	64,50	66,50	68,50	70,50	72,50	
<b>W05 (L)</b> 1/2 largeur poitrine / 1/2 chest width	47,50	50,50	53,50	56,50	59,50	
<b>H15B (L)</b> Longueur manche avec poignet / Sleeve length with cuff	61	61,75	62,50	63,25	64	
<b>H32 (L)</b> Hauteur poche devant / Front pocket height	11	11	12	12	13	
<b>W32 (L)</b> Largeur poche devant / Front pocket width	10	10	11	11	12	

CARE LABEL

PACKING	
Box	12 pcs / box S => L:54cm W:38cm H:20cm GW:3.99kg NW:2.89kg M => L:54cm W:38cm H:20cm GW:4.11kg NW:3.01kg L => L:54cm W:38cm H:20cm GW:4.26kg NW:3.16kg XL => L:54cm W:38cm H:20cm GW:4.36kg NW:3.26kg XXL => L:54cm W:38cm H:20cm GW:4.52kg NW:3.42kg