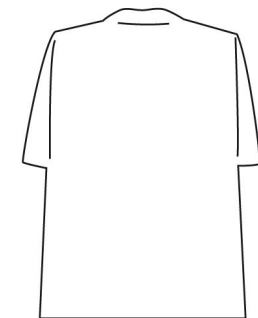


**PR656****SHORT SLEEVE CHEF'S JACKET**

CARTON	PACK	NO. SKU'S
24	6	24



Colour	Pantone	C	M	Y	K
Black	Black	0	0	0	100
White	0	0	0	0	0
Steel	7545	56	30	17	52

**Fabric**

65% Polyester, 35% Cotton twill 195gsm

**Colours**

White, Black, Steel

**Sizes**

XS, S, M, L, XL, 2XL, 3XL, 4XL

**Features**

- Easy care short sleeve chef's jacket
- Mandarin collar
- Ten button hole wrap over fastening
- High quality, long-life, resin buttons
- Left sleeve pen pocket
- Unisex sizing

**Country of Origin**

China

**Carton Dimensions**

60cm x 40cm x 22cm

**Carton Weight**

8kg approx.

**VAT Code**

6211 43 1000

<b>Call size</b>	XS	S	M	L	XL	2XL	3XL	4XL
<b>Chest to fit "</b>	30	34	38	42	46	50	52	54
<b>Chest to fit cm</b>	77	87	96	107	117	126	132	138
<b>Chest actual cm</b>	92	100	108	116	124	132	140	148
<b>DE,NL</b>	44	46	48	52	56	58	60	62
<b>FR,ES,PT</b>	40	42	44	46	48	50	52	54
<b>Back length cm</b>	76	76	76	76	76	76	76	76

**Marketing Description**

A short sleeve chef's jacket with a ten hole button hole wrap over fastening. To withstand the demands of repeated washing, the buttons are long life resin buttons. The left sleeve features a useful pen pocket.



INDUSTRIAL LAUNDERING 85°C MAXIMUM