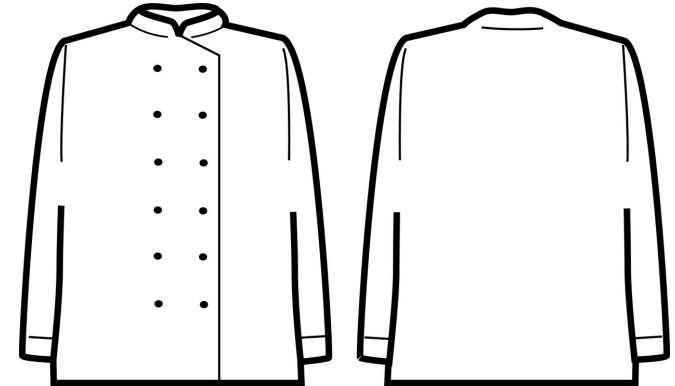


**PR657****LONG SLEEVE CHEF'S JACKET**

| CARTON | PACK | NO. SKU'S |
|--------|------|-----------|
| 24     | 6    | 24        |



| Colour | Pantone | C  | M  | Y  | K   |
|--------|---------|----|----|----|-----|
| Black  | Black   | 0  | 0  | 0  | 100 |
| White  | 0       | 0  | 0  | 0  | 0   |
| Steel  | 7545    | 56 | 30 | 17 | 52  |

**Fabric**

65% Polyester, 35% Cotton twill. 195gsm

**Colours**

White, Black, Steel

**Sizes**

XS, S, M, L, XL, 2XL,3XL, 4XL

**Features**

- Easy care long sleeve chef's jacket
- Ten button hole wrap over fastening
- High quality, long-life, resin buttons
- Unisex sizing

**Country of Origin**

China

**Carton Dimensions**

60cm x 40cm x 22cm

**Carton Weight**

10kg approx.

**VAT Code**

6211 43 1000

|                        |    |     |     |     |     |     |     |     |
|------------------------|----|-----|-----|-----|-----|-----|-----|-----|
| <b>Call size</b>       | XS | S   | M   | L   | XL  | 2XL | 3XL | 4XL |
| <b>Chest to fit "</b>  | 30 | 34  | 38  | 42  | 46  | 50  | 52  | 54  |
| <b>Chest to fit cm</b> | 77 | 87  | 96  | 107 | 117 | 126 | 132 | 138 |
| <b>Chest actual cm</b> | 92 | 100 | 108 | 116 | 124 | 132 | 140 | 148 |
| <b>DE,NL</b>           | 44 | 46  | 48  | 52  | 56  | 58  | 60  | 62  |
| <b>FR,ES,PT</b>        | 40 | 42  | 44  | 46  | 48  | 50  | 52  | 54  |
| <b>Back length cm</b>  | 76 | 76  | 76  | 76  | 76  | 76  | 76  | 76  |

**Marketing Description**

A long sleeve chef's jacket with a ten hole button hole wrap over fastening. To withstand the demands of repeated washing, the buttons are long life resin buttons. The left sleeve features a useful pen pocket.



INDUSTRIAL LAUNDERING 85°C MAXIMUM